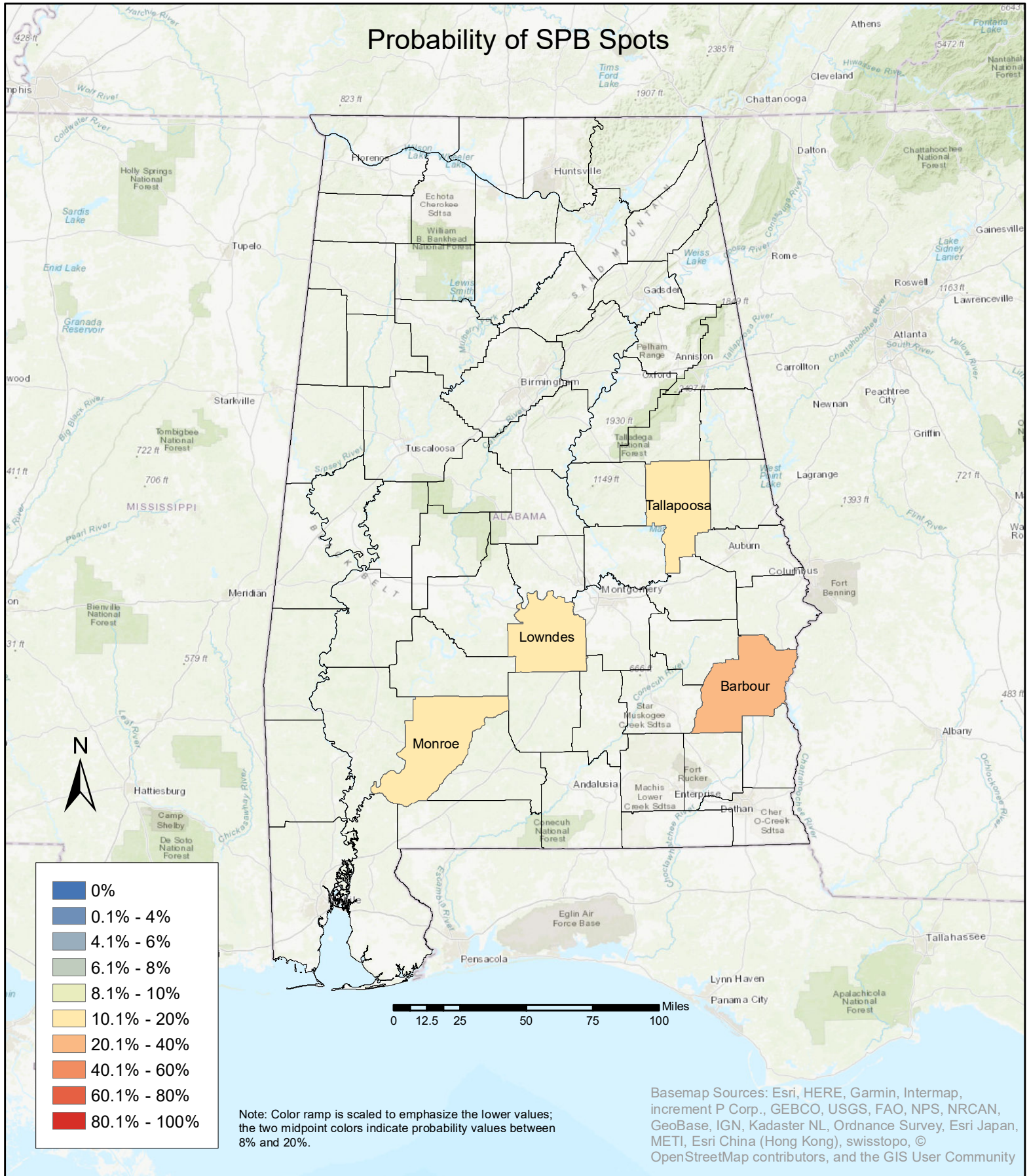


# Probability of SPB Spots



## Southern Pine Beetle (SPB) Outbreak Prediction Maps: Alabama 2020

The outbreak prediction model is based on a number of predictor variables that were determined to provide the best fit to the data. Most prominent among the driving variables were number of SPB/two week time period, and number of spots last year.

The SPB prediction project is supported by USDA Forest Service: Science and Technology Development Program (STDP)  
 Contact: Matt Ayres - matthew.p.ayres@dartmouth.edu; Carissa Aoki - caoki@bates.edu